



Key features

- Designed for all cameras of the IDS uEye+ Warp10 camera family (C-mount, TFL-mount)
- Active cooling by an electric fan in the heat dissipating aluminum plate
- Reduces the operating temperature of the camera by about 10°C
- Can improve the thermal noise of the camera and thus optimize image quality

Specification

General data

Typical cooling capacity	Reduces the operating temperature of the camera by about 10°C
Fan service life	30.000 h

Ambient conditions

The temperature values given below refer to the outer device temperature of the housing.

Device temperature during operation	0 °C - 55 °C / 32 °F - 131 °F
Device temperature during storage	-20 °C - 60 °C / -4 °F - 140 °F
Humidity (relative, non-condensing)	20 % - 80 %

Subject to technical modifications (2023-06-06)

Connections

Power supply	12 - 24 V DC \pm 10%
Current consumption	<ul style="list-style-type: none">• For the complete voltage range: max. 150 mA• Current consumption at e.g. 12 V: 90 mA
Type of plug	<ul style="list-style-type: none">• Spring-loaded terminal 2-pole, grid dimension 5 mm• Metz Connect, MPN: AST2250202

Design

Dimensions H/W/D	15 mm x 70.0 mm x 84.4 mm
Material	Aluminum, black anodized
IP code	IP20
Weight	165 g
Included screws for mounting on the camera	4 x M3x16

Technical drawing

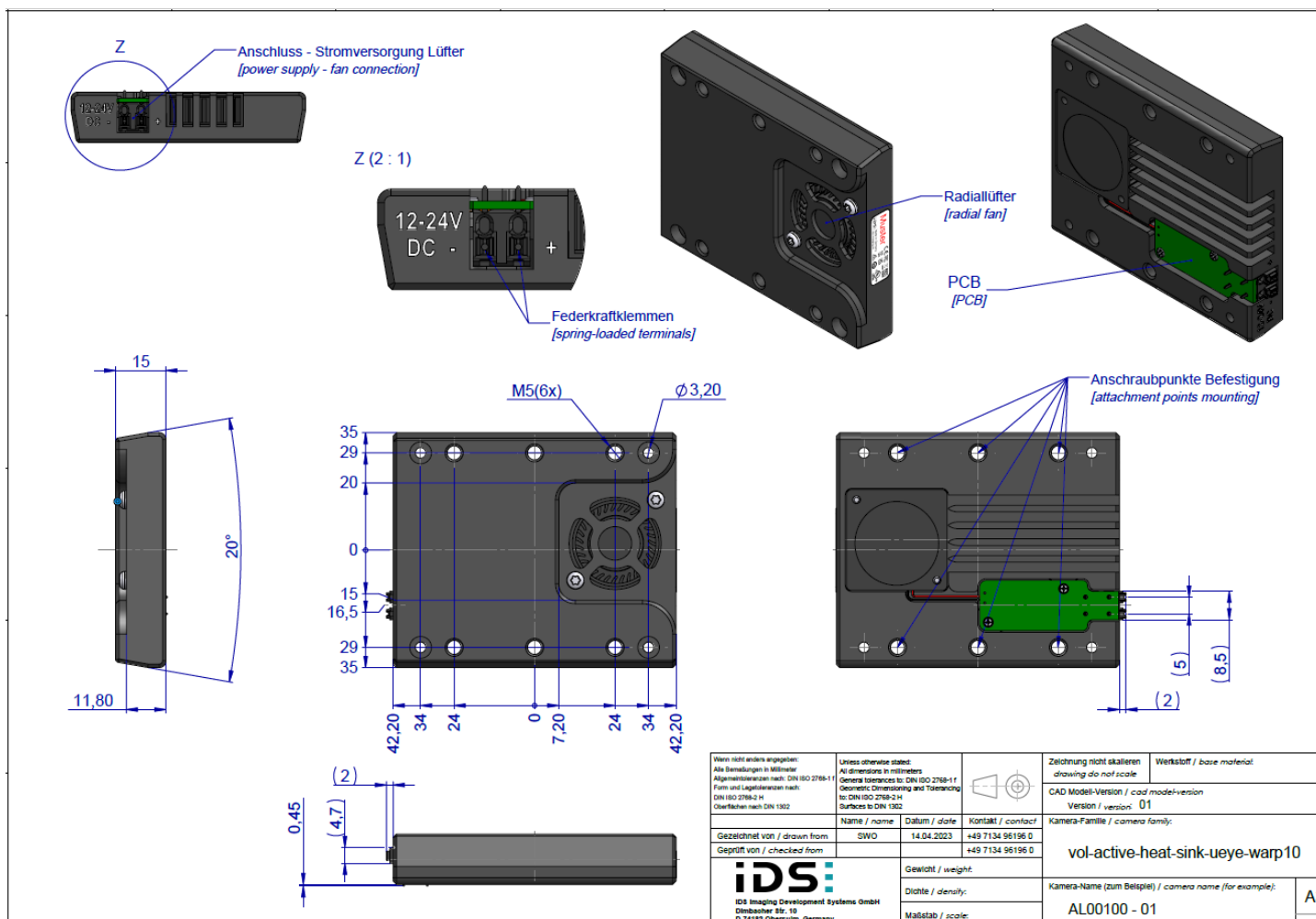


fig. 1: Active Heat Sink for uEye Warp10

Subject to technical modifications (2023-06-06)